

# Fred.

ESTATE AGENTS



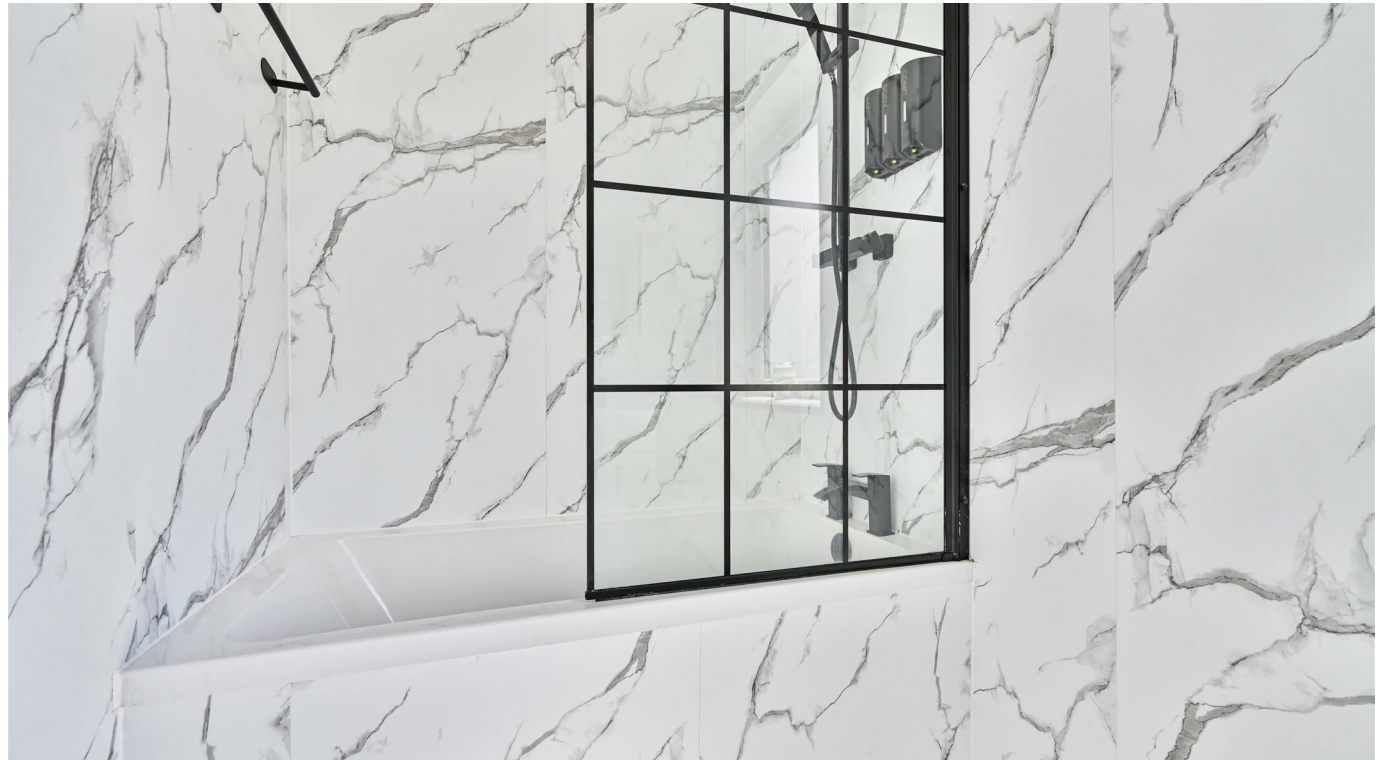
**17 Dimsdale Crescent**

Wishaw

**Offers over £120,000**







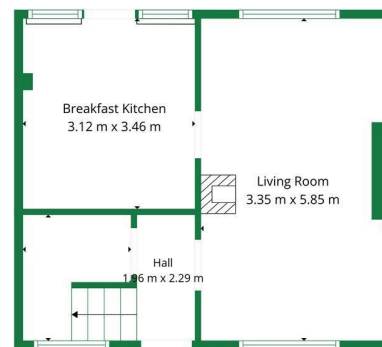
Situated in the highly sought-after Dimsdale area, this beautifully presented modern two-bedroom mid-terraced home is offered in true move-in condition and will be an ideal purchase for first-time buyers, young professionals, or those looking to downsize.

Upstairs, there are two generously sized bedrooms, both benefiting from fitted storage, providing excellent space and functionality. The stunning family bathroom is finished to a high standard with elegant marble-effect wall coverings, a modern suite, and a shower over the bath.

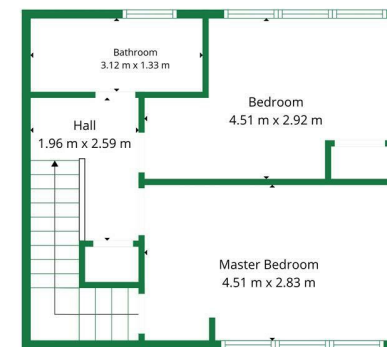
Externally, the property enjoys a private rear garden with both patio and lawn areas, ideal for relaxing or outdoor dining. Beyond the garden lies attractive green space, offering additional privacy and pleasant open views.

Early interest is expected in this beautifully decorated home, combining modern style, practicality, and a desirable location.

Wishaw offers a great selection of shops, bars, restaurants and leisure facilities. It is perfectly located for the commuter, with the M74 providing convenient access to the central belt. The town also offers excellent public transport, with train and bus services providing links to the surrounding areas.



Ground Floor



1st Floor



**TOTAL: 76 m<sup>2</sup>**  
Ground floor: 38 m<sup>2</sup>, 1st floor: 38 m<sup>2</sup>  
EXCLUDED AREAS: WALLS: 8 m<sup>2</sup>

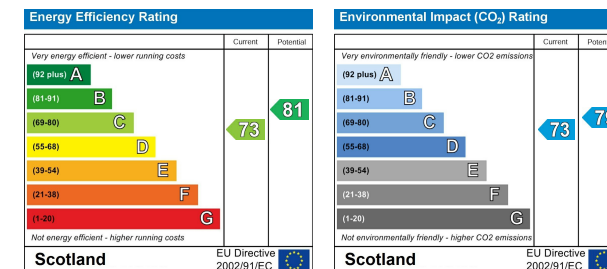


## Viewing

Please contact us on 01698 305618 if you wish to arrange a viewing appointment for this property or require further information.

These particulars, whilst believed to be accurate are set out as a general outline only for guidance and do not constitute any part of an offer or contract. Intending purchasers should not rely on them as statements of representation of fact, but must satisfy themselves by inspection or otherwise as to their accuracy. No person in this firm's employment has the authority to make or give any representation or warranty in respect of the property.

## Energy Efficiency Graph



**438 Brandon Street, Motherwell, North Lanarkshire, ML1 1XA**  
**01698 305618 | info@fredestateagents.co.uk**